

METK

Maaelu
Teadmuskeskus

Eesti maaelu tarkvara

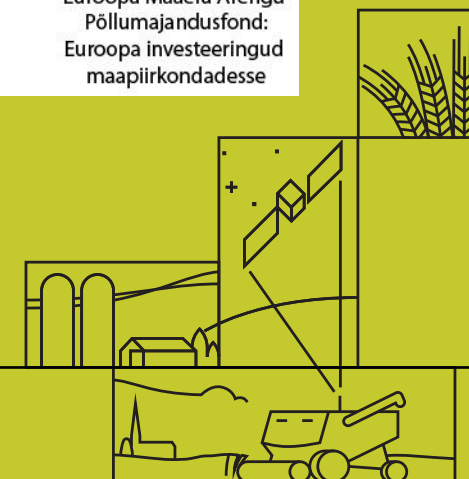
Droonide kasutamine METKis



Euroopa Maaelu Arengu
Põllumajandusfond:
Euroopa investeeringud
maapiirkondadesse

Anti Konsap
Insener

26.03.2024





METIK

Maaelu
Teadmuskeskus

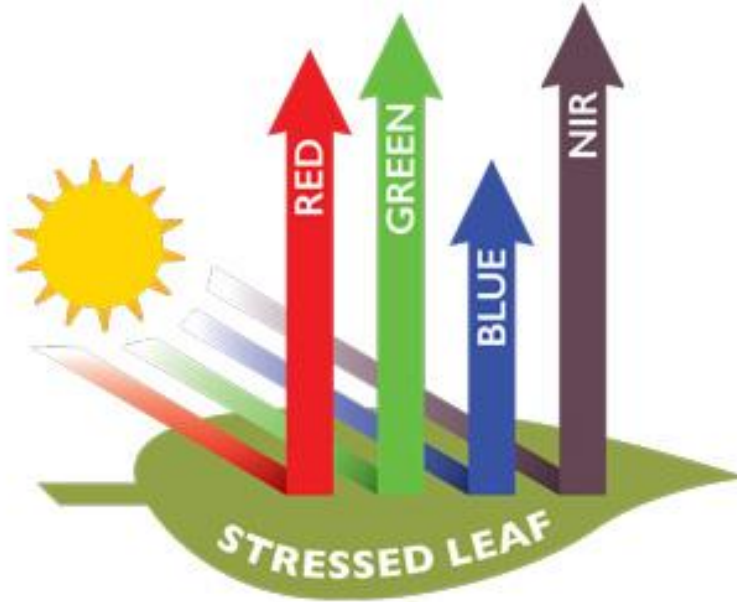
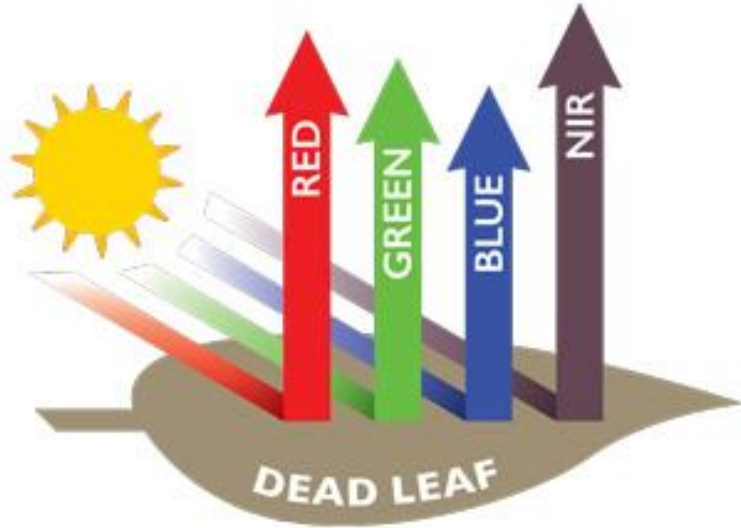


Euroopa Liit
Euroopa
Regionaalarengu Fond



Eesti
tuleviku heaks

Vegetation Reflectance



HEALTHY VEGETATION REFLECTANCE

50% NIR 8% RED



NDVI = 0.72

STRESSED VEGETATION REFLECTANCE

40% NIR 30% RED



NDVI = 0.14

$$\text{NDVI} = \frac{\text{NIR} - \text{RED}}{\text{NIR} + \text{RED}}$$

METIK

Maaelu
Teadmuskeskus



METIK

Maaelu
Teadmuskeskus





METIK

Maaelu
Teadmuskeskus



METIK

Maaelu
Teadmuskeskus



METIK

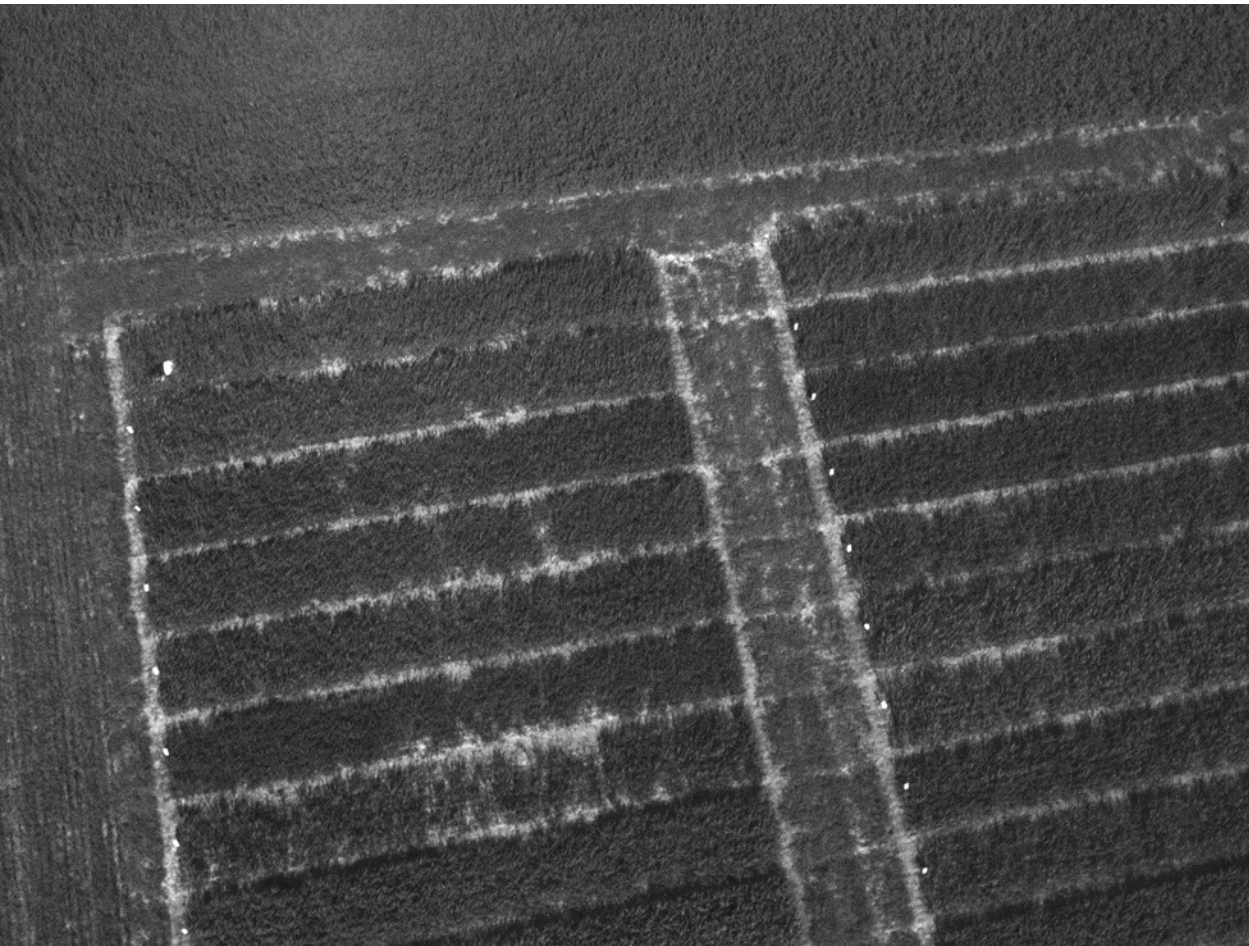
Maaelu
Teadmuskeskus



METIK

Maaelu
Teadmuskeskus





METIK

Maaelu
Teadmuskeskus



ORIGINAL 2D AERIAL IMAGERY

ORTHOMOSAIC



METIK

Maaelu
Teadmuskeskus



24 May 2021
Winter Wheat
Flight height: 40m



METIK

Maaelu
Teadmuskeskus

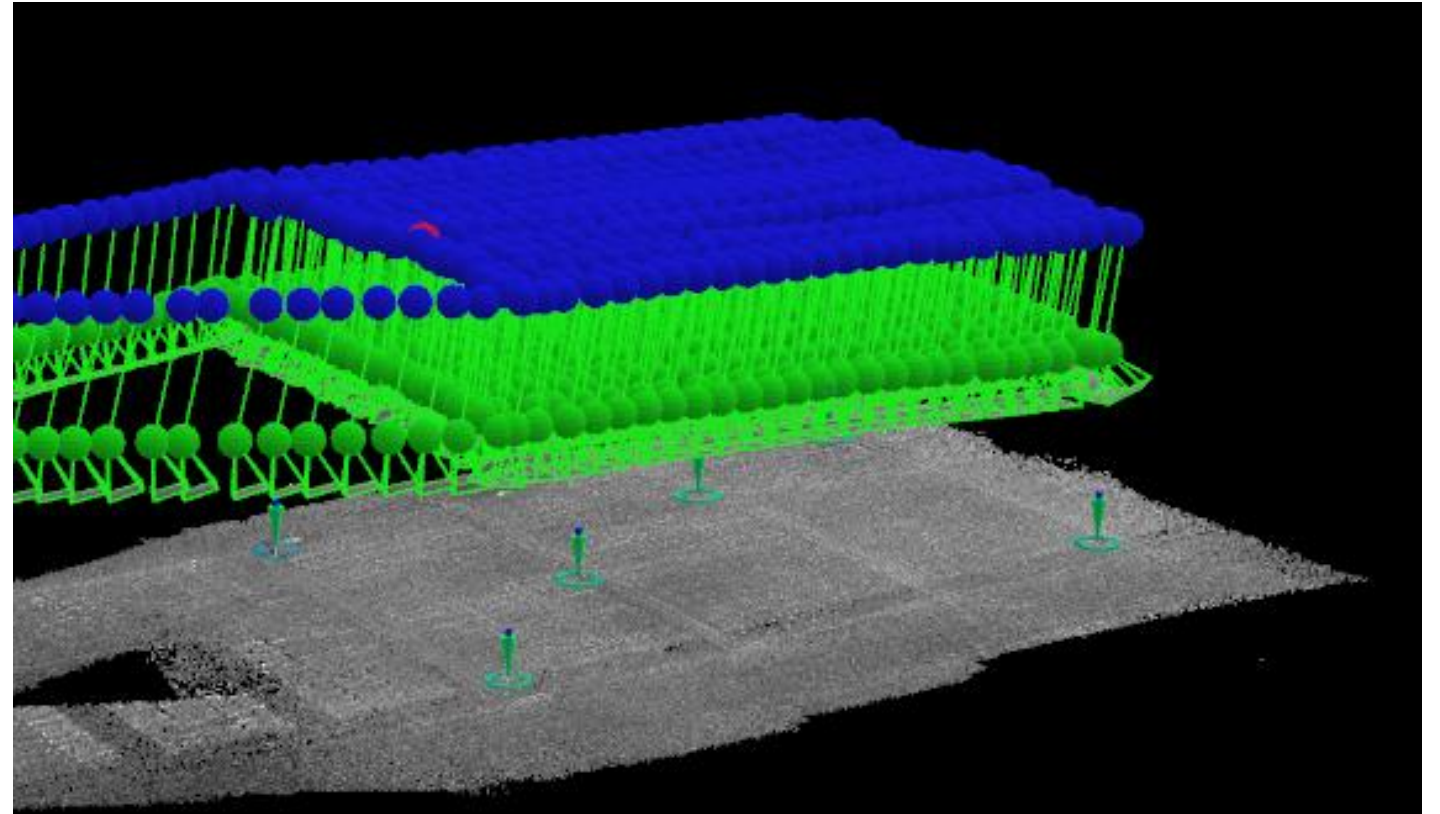
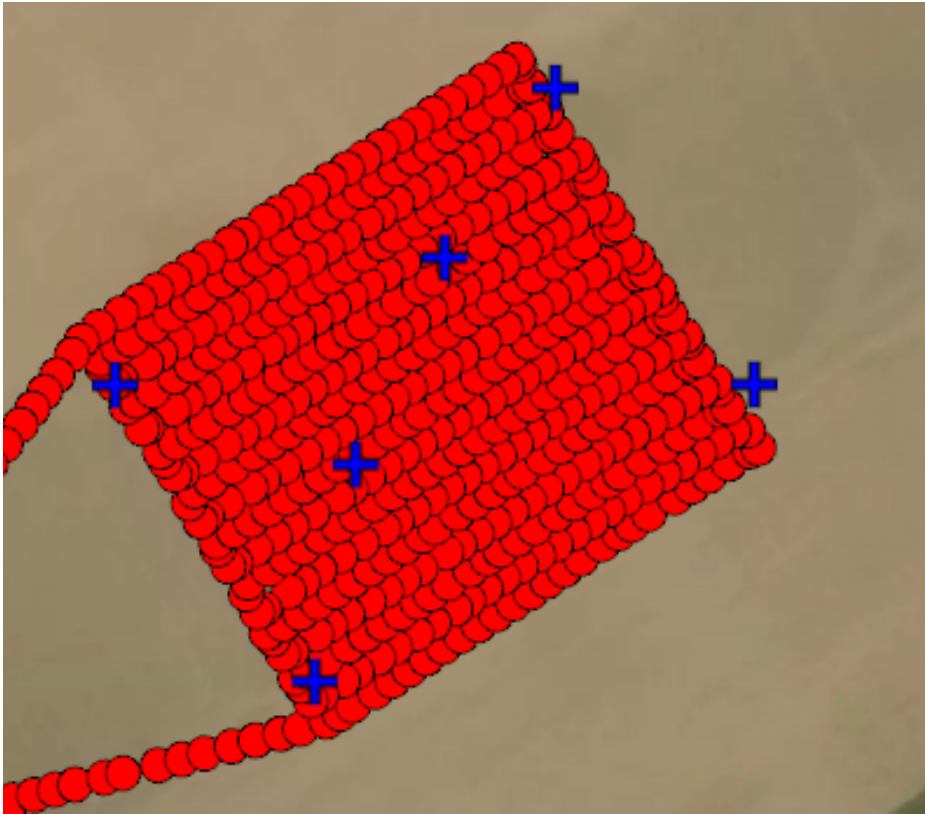




METIK

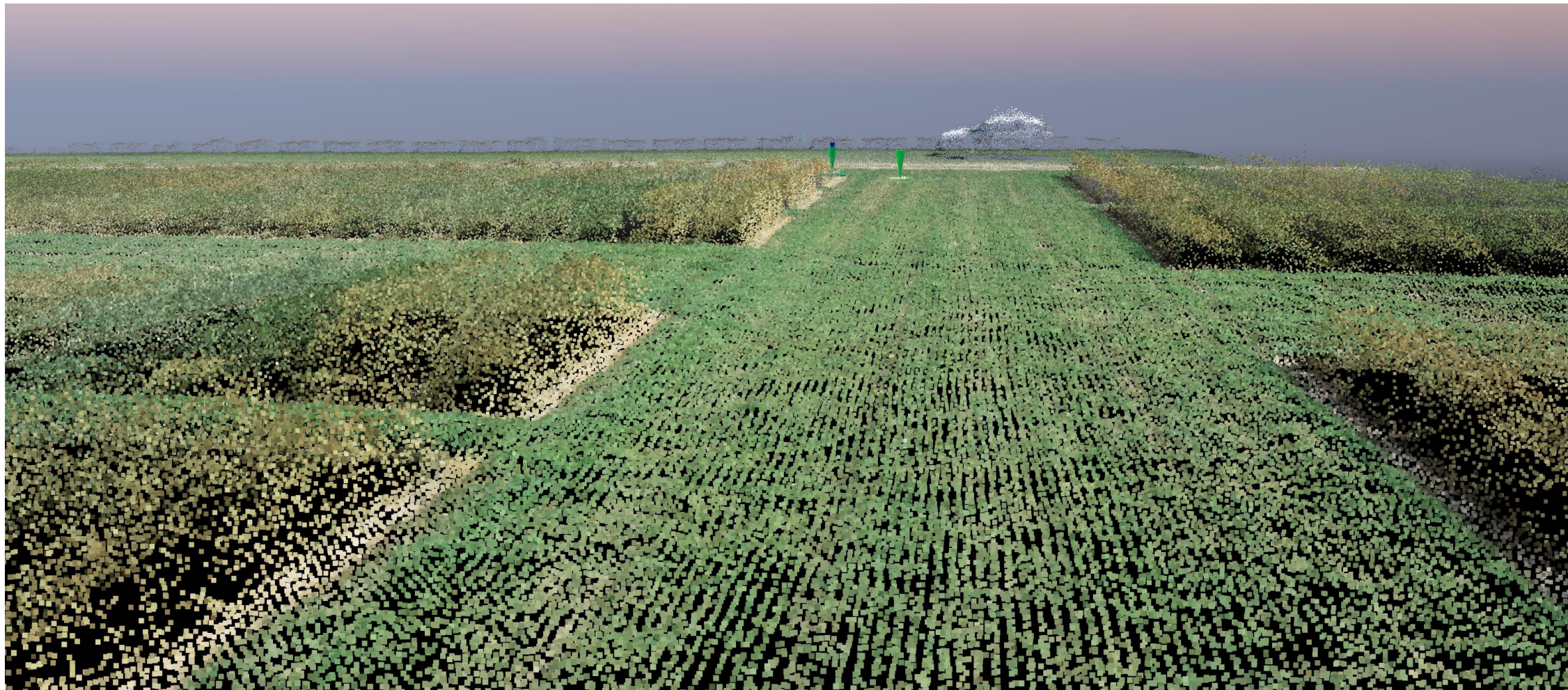
Maaelu
Teadmuskeskus

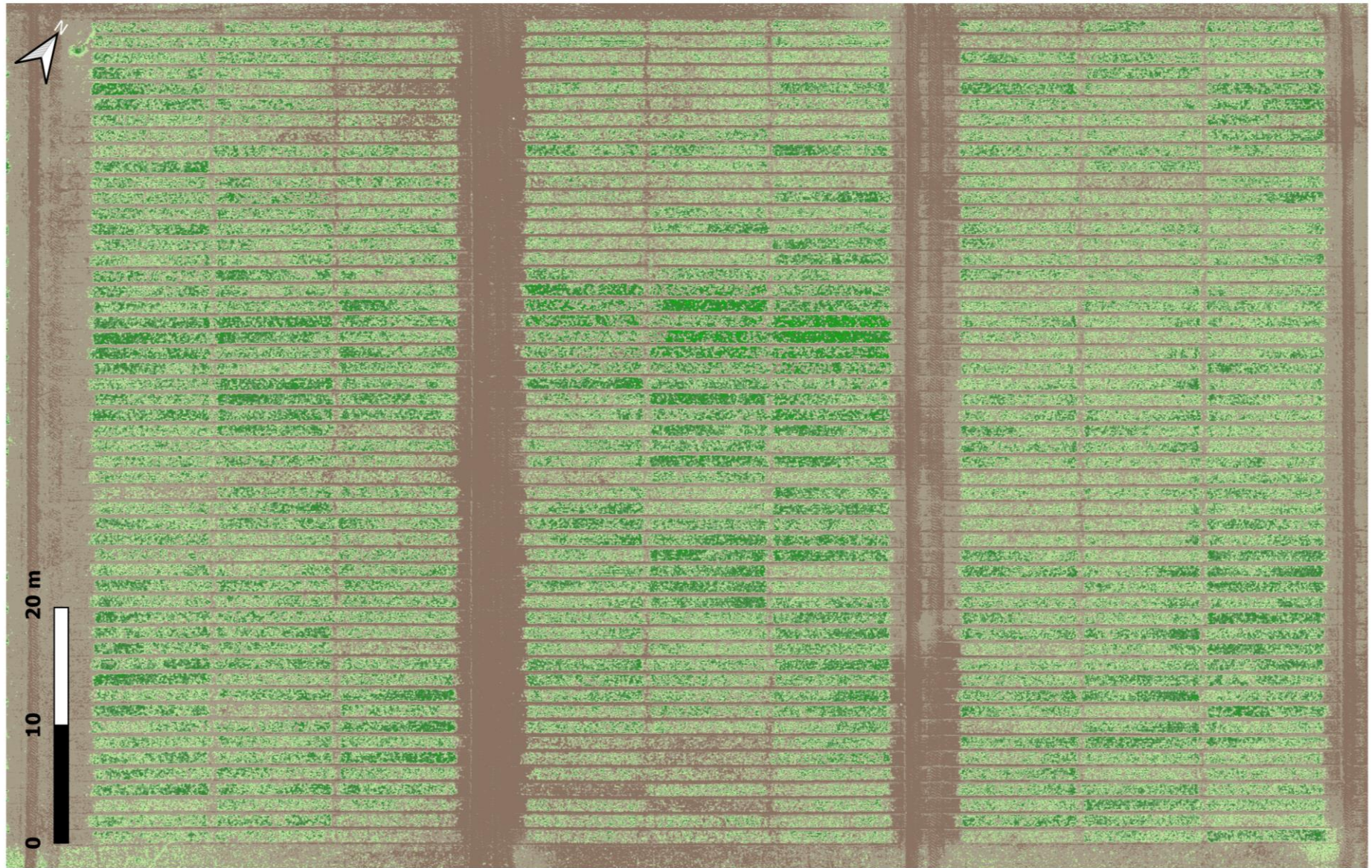
Pix4DMapper software



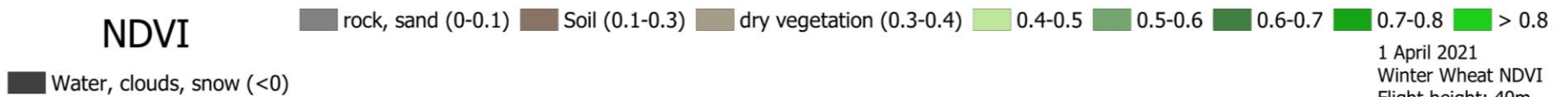
METIK

Maaelu
Teadmuskeskus





NDVI

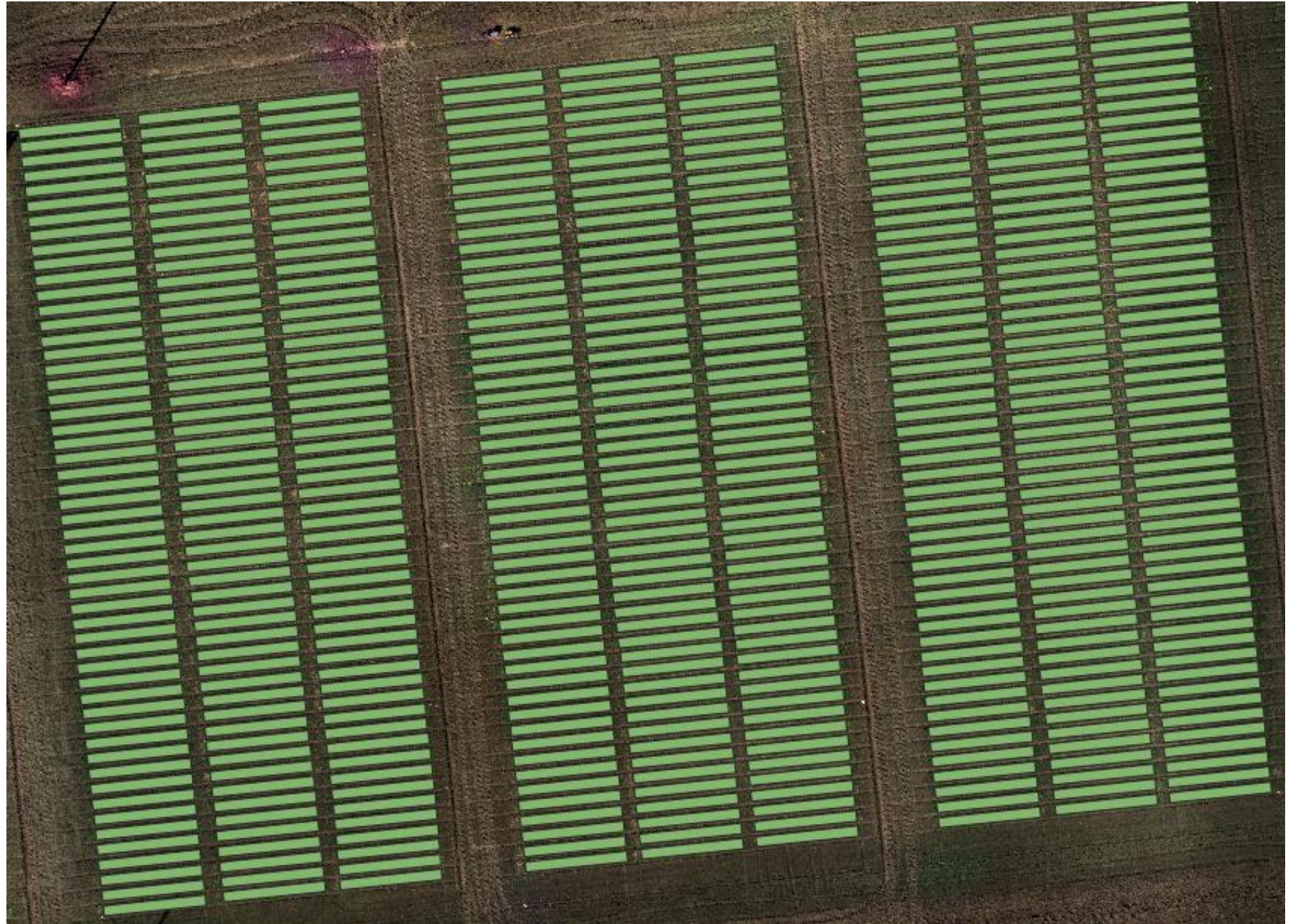


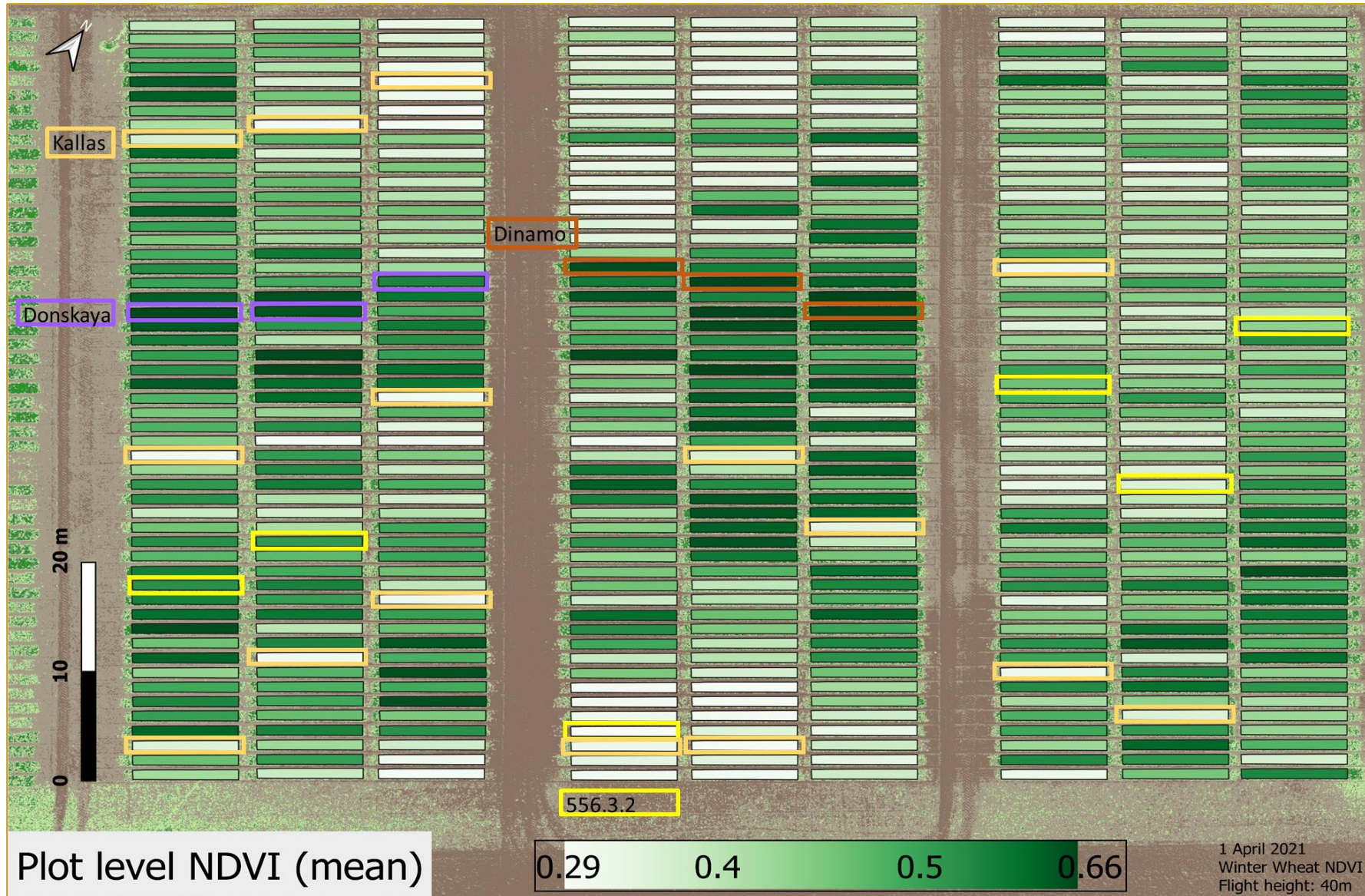
1 April 2021
Winter Wheat NDVI
Flight height: 40m

METIK

Maaelu
Teadmuskeskus

– QGIS







METIK

Maaelu
Teadmuskeskus



METIK

Maaelu
Teadmuskeskus

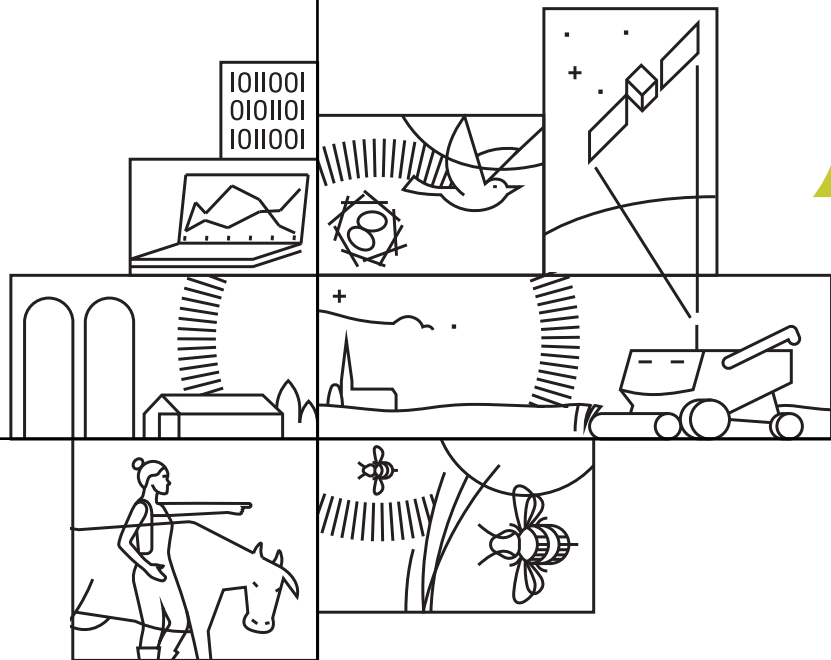


METIK

Maaelu
Teadmuskeskus

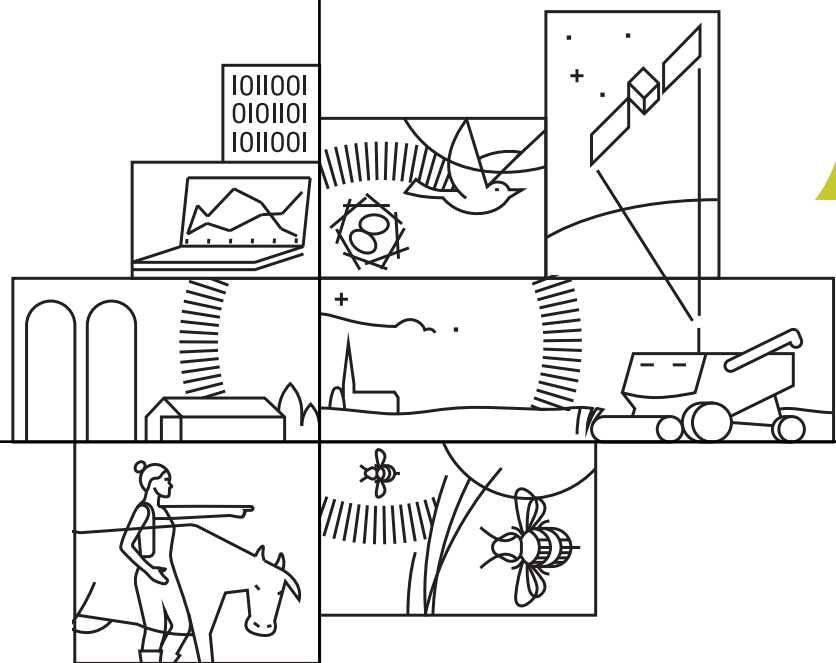
Käimasolevad suuremad
projektid, milles on droon
kaasatud:

Väetamise ABC
Fabanova



METK

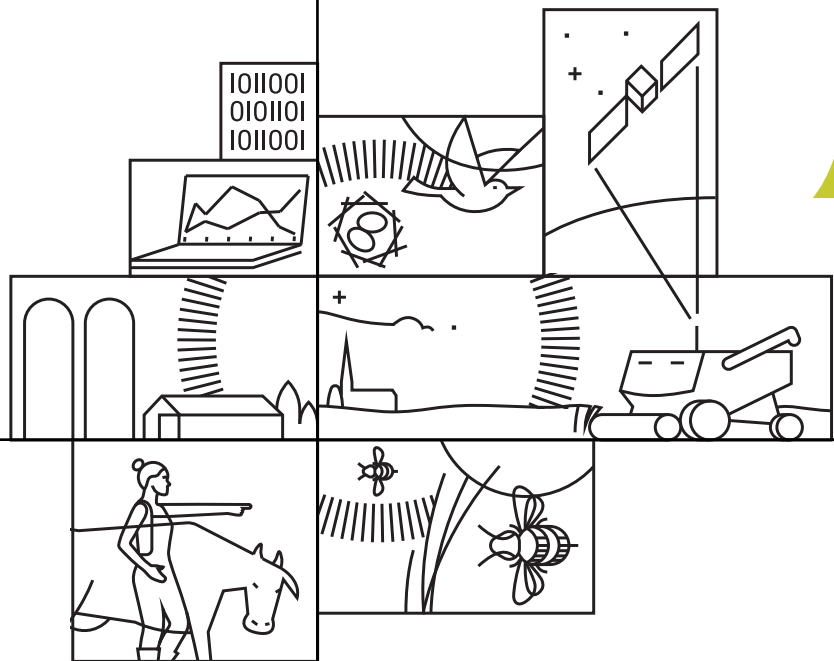
Maaelu
Teadmuskeskus



<https://metk.agri.ee/nobalwheat>
<https://www.youtube.com/watch?v=mmkEhPM1X7w>
<https://link.springer.com/article/10.1007/s00122-023-04529-1>
<https://www.mdpi.com/2073-4395/14/1/51>

METK

Maaelu
Teadmuskeskus



Anti Konsap
anti.konsap@metk.agri.ee