

Farm machine data & DataConnect

How JohnDeere organizes farm data and data sharing

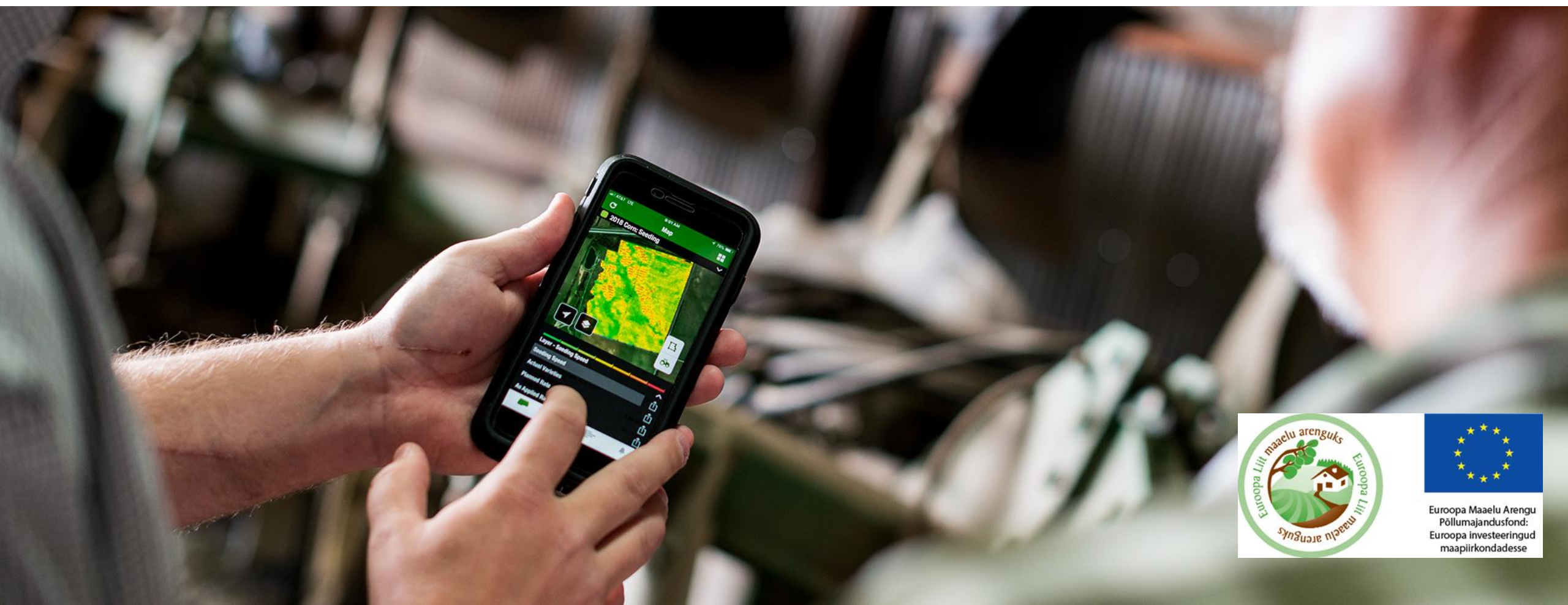
Dr. Thomas Engel

Manager Technology Innovation Strategy



JOHN DEERE

NOTHING RUNS LIKE A DEERE



Euroopa Maaelu Arengu
Põllumajandusfond:
Euroopa investeeringud
maapiirkondadesse

John Deere at a glance 2021

- Headquarters: Moline,
Illinois, United States
- Employees worldwide: 69,600
- Total net sales and revenues:
\$44,024 billion US
- Net income: \$5,963 billion US



Portfolio

- Agricultural Equipment
- Construction Equipment
- Turf Equipment
- Forestry Equipment
- Financial Services
- Power Systems
- Intelligent Solutions
- Worldwide Parts Services



European Technology Innovation Center **Kaiserslautern - Germany**

- Opened in 2010 in Kaiserslautern
- Engineers, IT and marketing specialists develop 'intelligent solutions' for precision farming and other future technologies
- Cooperation with universities & research institutions
- 210 employees



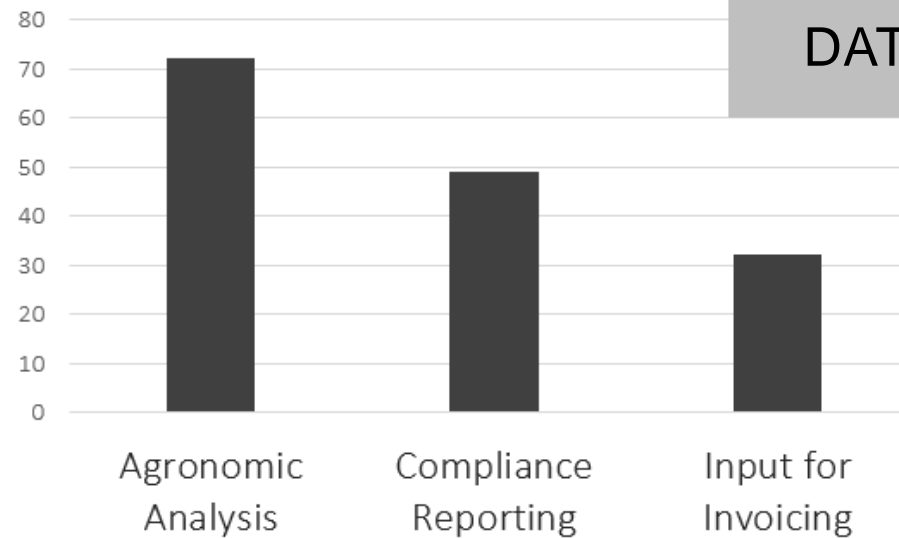
Machine capacity doesn't stop at field boundaries

FIELD

OFFICE

ANYWHERE / ANYTIME

Top 3 reasons
for data recording



N=258 (UK, GER, FR)*

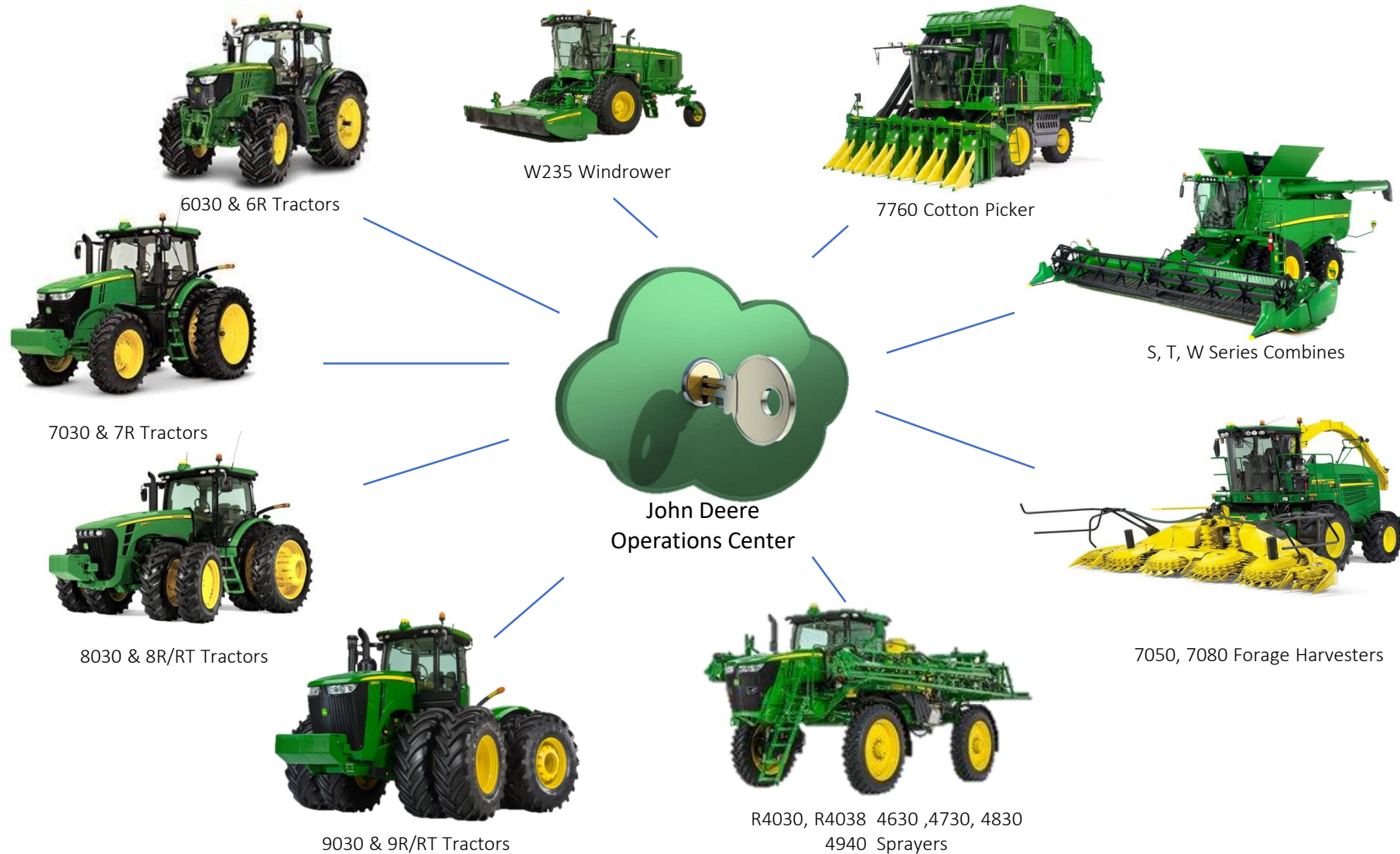
DATA



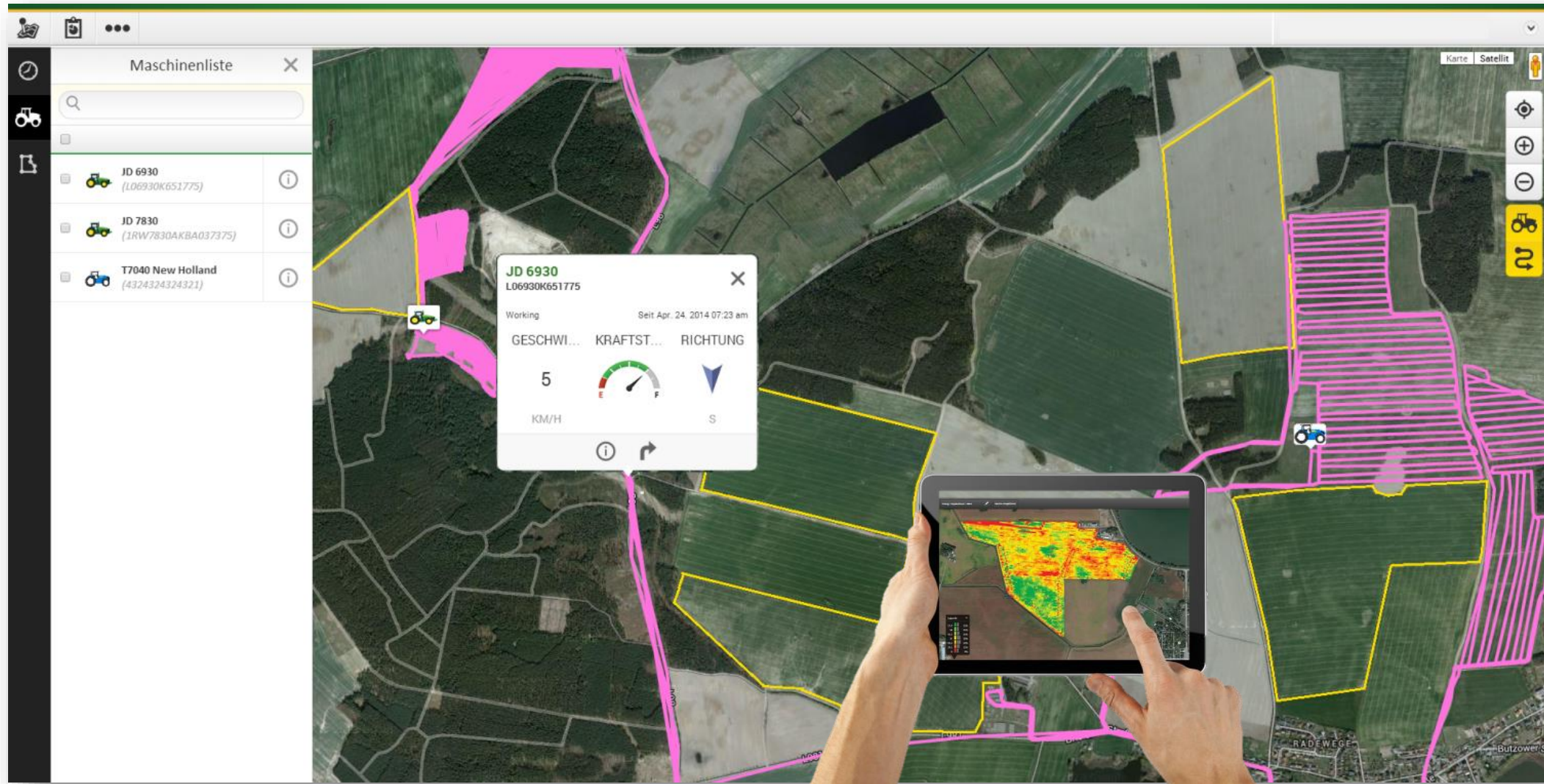
**DATA
handling
matters!**

* EMR study on technology adoption, 2020

Cloud-based Connectivity



MyJD Operations Center



MyJD Operations Center - My Machines

The screenshot displays the MyJD Operations Center interface. On the left, a sidebar contains icons for a map, a clipboard, and a menu. The main area is titled 'Maschinenliste' (Machine List) and features a search bar. Below the search bar, a list of machines is shown, each with a tractor icon, a machine ID, and an information icon. The machines listed are:

- 1L06210RCDU766683 (1L06210RCDU766683)
- 1RW7230RADC080053 (1RW7230RADC080053)
- 1RW7230REDC080056 (1RW7230REDC080056)
- 1RW7230RKDC080063 (1RW7230RKDC080063)
- 1RW7230RLDC080054 (1RW7230RLDC080054)
- 1RW7230RPDC080062 (1RW7230RPDC080062)
- 1RW7230RVDC080052 (1RW7230RVDC080052)
- 1RW7250RCDS080075 (1RW7250RCDS080075)
- 1RW7250RPDS080077 (1RW7250RPDS080077)
- 1RW7250RPDS080080 (1RW7250RPDS080080)

On the right, a detailed view of a John Deere tractor is shown. The tractor is identified by the ID '1RW7290RCDD080055'. The status is 'Working' and the time is 'Seit Jun. 5. 2014 02:07 pm'. The view includes a speedometer showing '1 KM/H' and a fuel gauge showing 'E' (Empty) to 'F' (Full). The direction is indicated as 'SO' (South). The background shows an aerial view of a rural landscape with fields and a road.

MyJD Operations Center – Field Analyzer



OPEN LOCAL SAFE

YOUR #1 FOR
PRECISION
AGRICULTURE



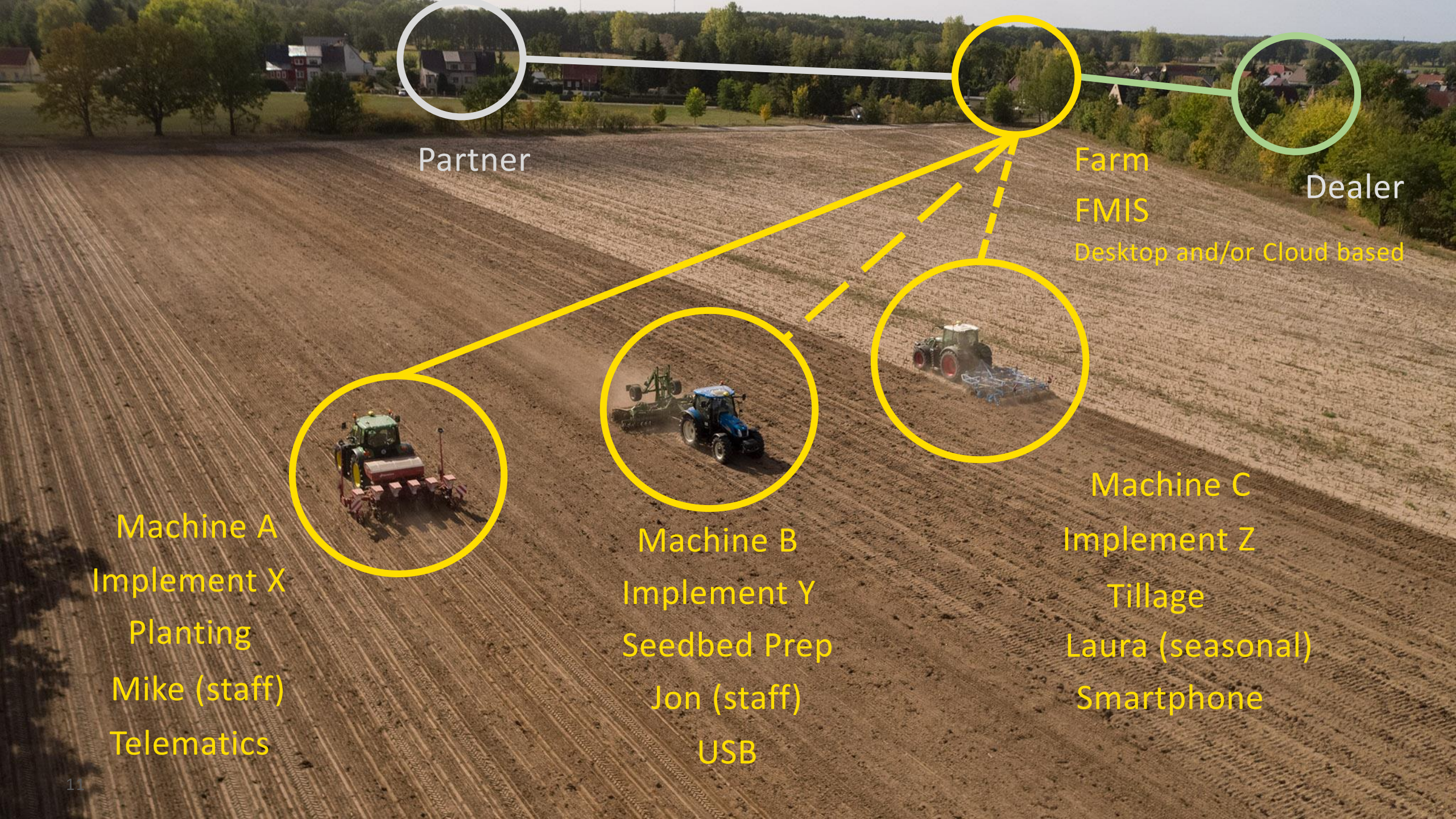
JOHN

JOHN DEERE OPERATIONS CENTER CONNECTED*

*AVAILABILITY VARIES PER COUNTRY

YOU WANT TO CONNECT AS WELL?





Partner



Farm

FMIS

Desktop and/or Cloud based



Dealer



Machine A

Implement X

Planting

Mike (staff)

Telematics



Machine B

Implement Y

Seedbed Prep

Jon (staff)

USB



Machine C

Implement Z

Tillage

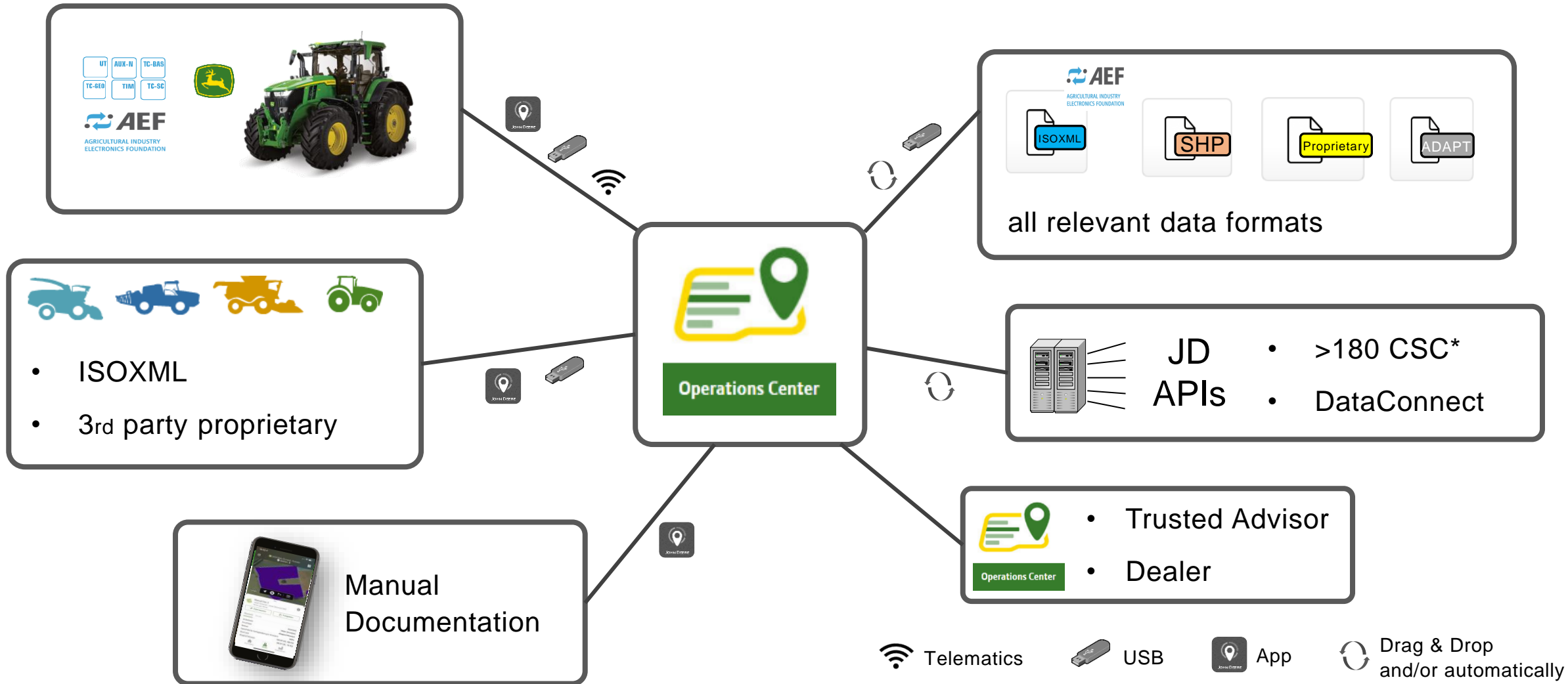
Laura (seasonal)

Smartphone

FIELD

OFFICE

ANYWHERE / ANYTIME



* CSC = Connected Software Company

OPEN ecosystem

John Deere Operations Center Connected

> 180 connected software companies

JOHN DEERE OPERATIONS CENTER CONNECTED*

*AVAILABILITY VARIES PER COUNTRY

YOU WANT TO CONNECT AS WELL?

DEVELOPER.DEERE.COM



2013

2014

2015

2016

2017

2018

2019

2020

OPEN ecosystem

DataConnect

- Cloud-to-Cloud communication

Data:

- Current Location
 - Location history
 - Fuel level
 - Speed
 - Engine on/off
- Near-real-time data exchange
 - No data losses
 - Use of preferred data platform
 - Backwards compatible



MyPLM
CONNECT

365FarmNet

AFS
CONNECT



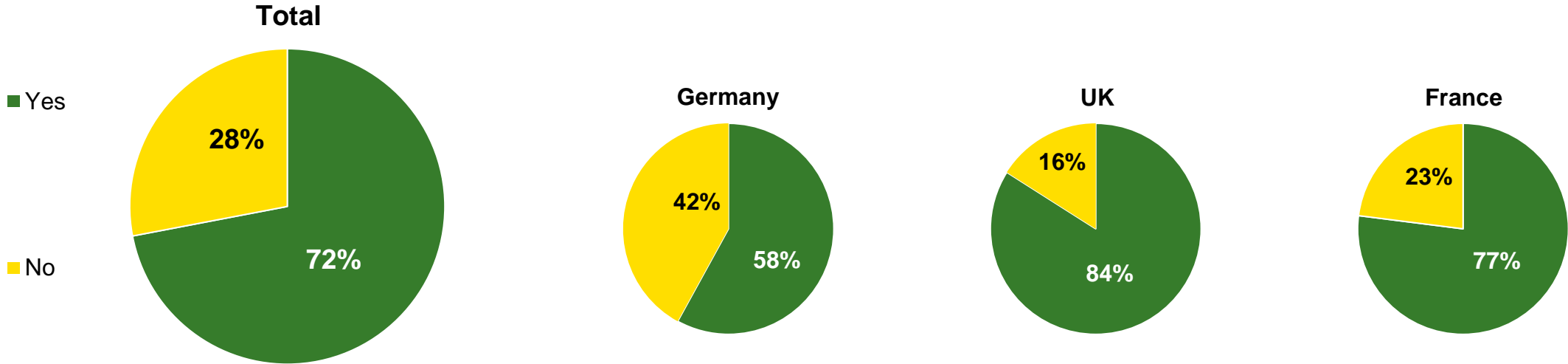
LOCAL

Your local John Deere dealer

- John Deere dealer expertise in
 - Sales (value)
 - Service & Setup
 - Trouble Shooting to provide Uptime
- Is located close by the customer
- Enables Remote Services and Diagnostics



SAFE



Reasons to not trust cloud service security:

- Access to cloud data is not exclusive to me
- The services can be hacked / data can be exposed
- Third parties or other companies could gain access the data

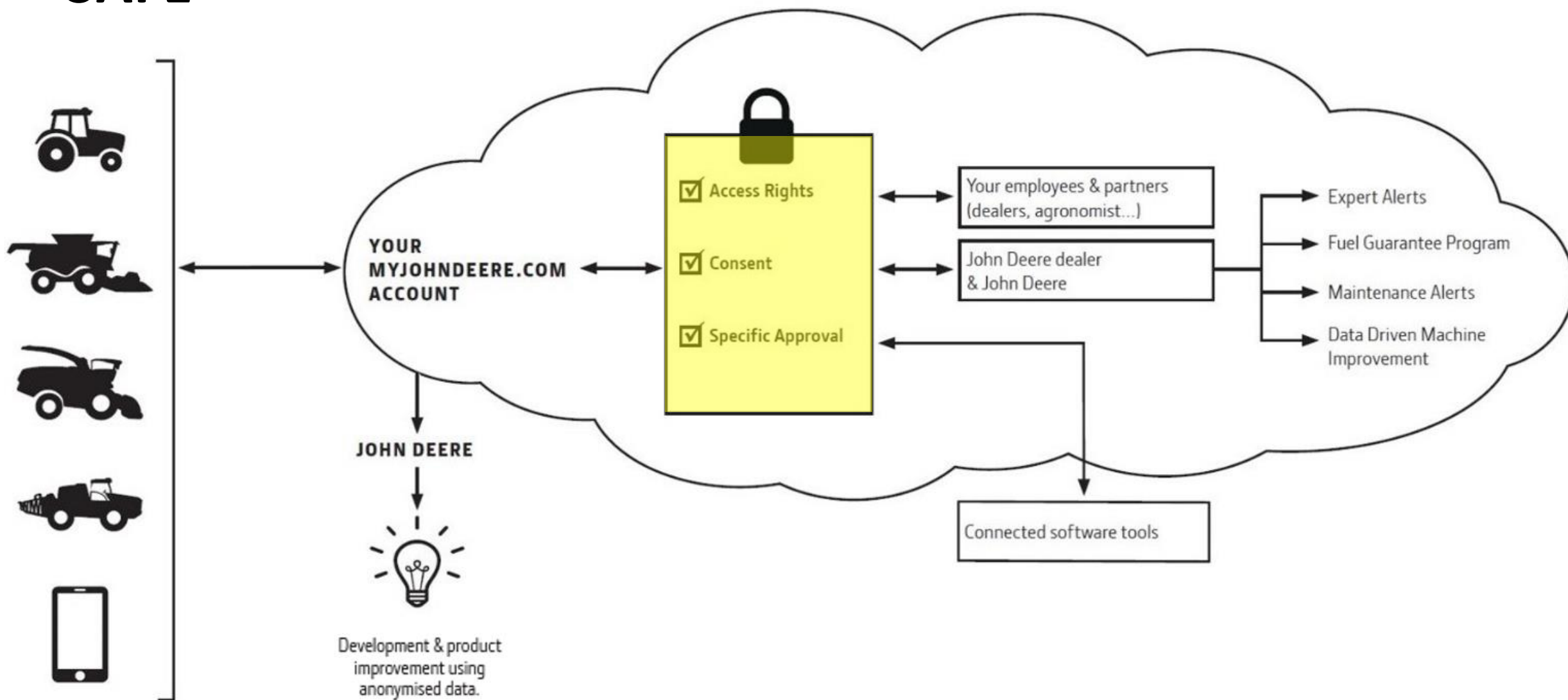
N=328

internal study, 2019

"Finally, thinking about the security of your operation's data, do you consider cloud services to be a secure place for your data? If no, please explain why not?"

| | |
|---------|-----|
| Total | 164 |
| Germany | 64 |
| UK | 45 |
| France | 48 |
| Spain | 7 |

SAFE



SAFE

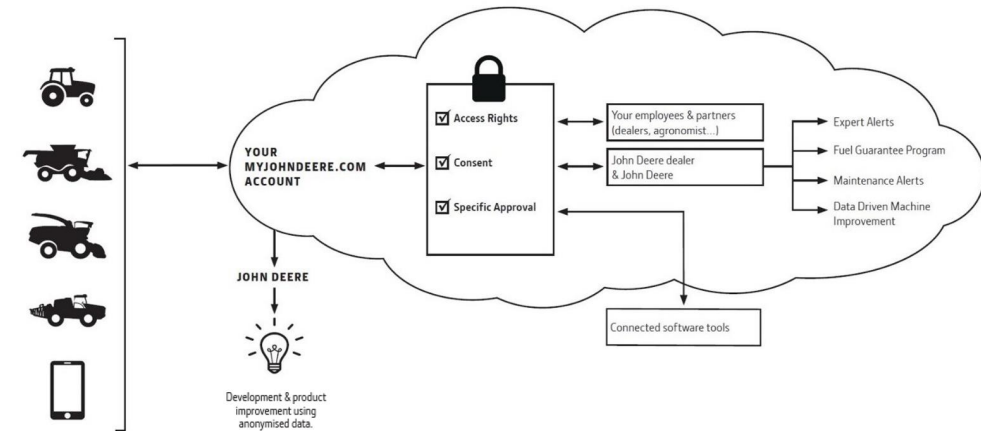
- Full control who has access to the data
- Granted access rights can be revoked at any time
- Data is effectively protected against data-loss and theft



How Data Sharing benefits YOU

Using Data to Improve productivity

- Increasing Uptime
Expert Alerts
- Improving Machine Optimization
Remote Display Access
- Remote Machine Diagnostics
Service Advisor Remote





JOHN DEERE

Thank you!