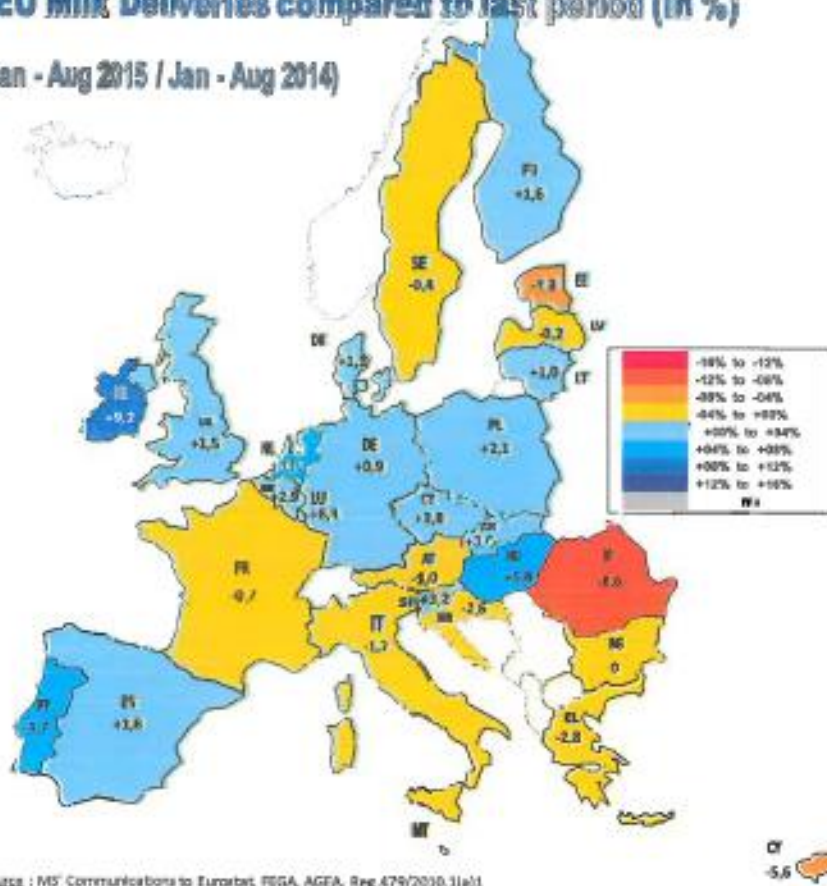




European
Commission

EU Milk Deliveries compared to last period (in %)

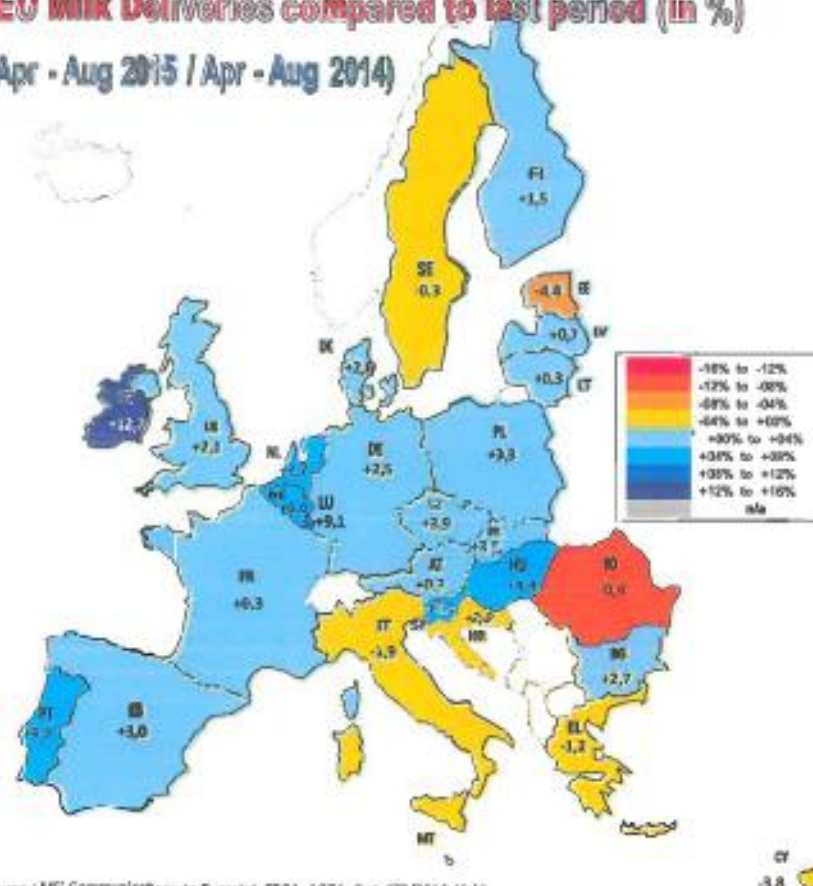
(Jan - Aug 2015 / Jan - Aug 2014)



Source : MS' Communications to Eurostat, FEGA, AGEA, Reg 479/2010 1(a)1

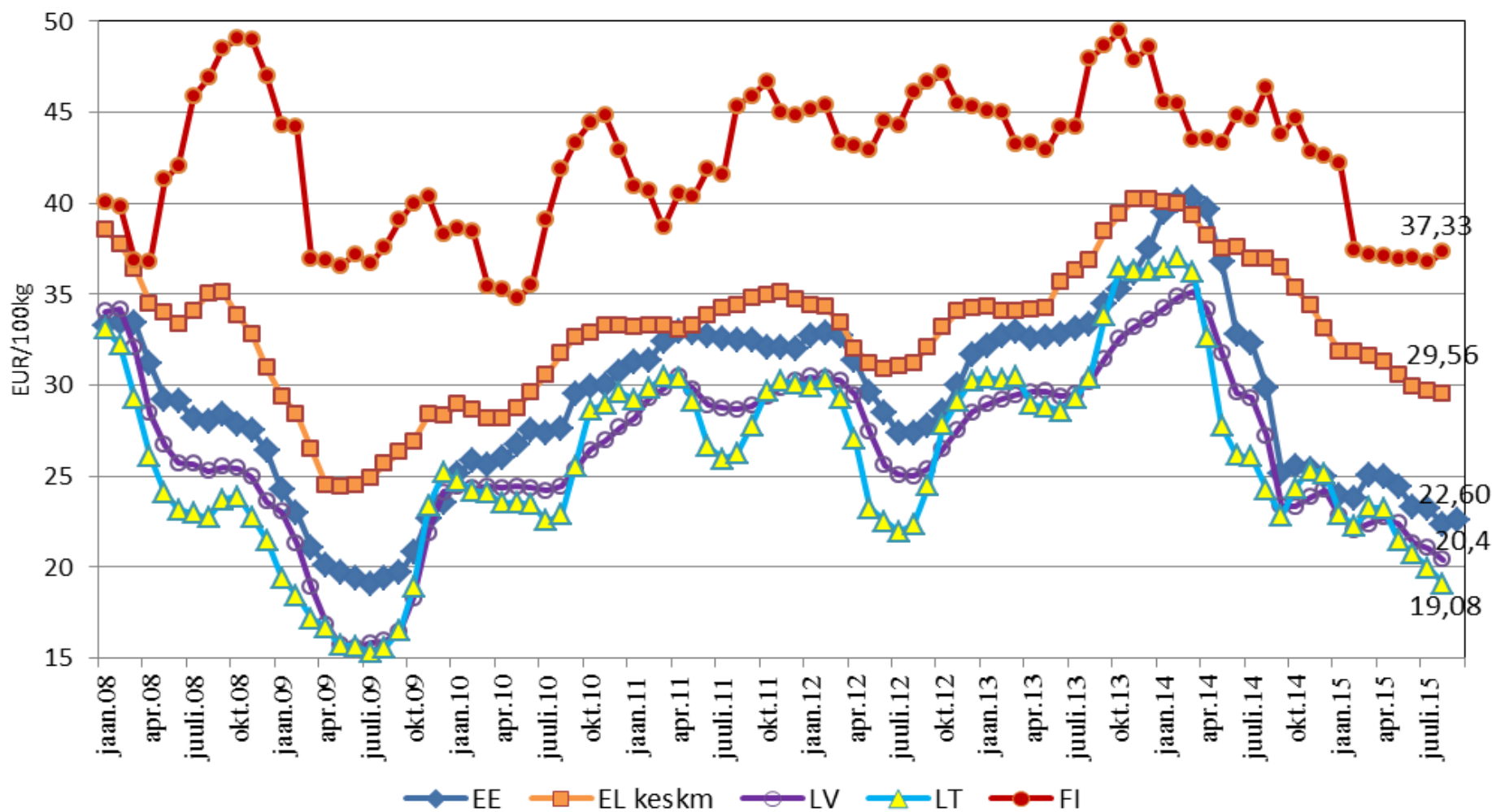
EU Milk Deliveries compared to last period (in %)

(Apr - Aug 2015 / Apr - Aug 2014)



Source : MS' Communications to Eurostat, FEGA, AGEA, Reg 479/2010 1(a)1

Piimahindade võrdlus



LEHMAD ARV JA PIIMATOODANG EESTI VABARIIGIS 1922 -1937.a.

Aasta	Lehmade üldarv	Piimatoodang tonnides	Lehmade keskmise piimatoodang aastas kg	Kontrollkarja lehmade keskmise piimatoogang kg
1922	307 303	395 192	1286	1899
1923	319 685	401 524	1256	1870
1924	321 245	497 287	1548	2161
1925	360 861	606 246	1680	2293
1926	379 780	630 814	1661	2274
1927	386 680	658 516	1703	2316
1928	403 850	653 025	1617	2230
1929	406 562	760 271	1870	2483
1930	415 897	810 999	1950	2589
1931	428 130	812 163	1897	2518
1932	436 120	791 122	1814	2408
1933	427 330	806 372	1887	2478
1934	406 730	817 527	2010	2640
1935	402 660	803 307	1995	2621
1936	398 750	838 571	2103	2763
1937	446 470	975 537	2185	2893

Andmed Eesti Põllumajanduse statistilistest aastaraamatutest 1926 -1937